



EMERGING FUTURES 3



RESEARCH CONTEXT

A survey of prospective, applied, current and completed students

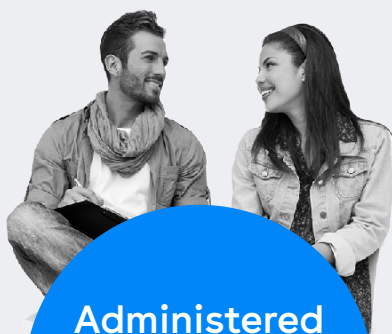
INTERNATIONAL STUDENT PERCEPTIONS, CHOICES AND MOTIVATIONS

Emerging Futures 3 is the latest global research from IDP Connect's flagship biannual Emerging Futures student survey. EF3 examines the attitudes and intentions of over 21,000 prospective and current international students from over 100 countries, our largest ever respondent profile, between 27 February - 19 March, 2023.

The research equips the global higher education sector, institutions, and policy makers with the data and insight needed to drive positive student-first policies. It aims to help us understand attitudes towards immigration and post-study work policies, cost of living concerns, as well as the growing importance of various aspects of student support.



15 minute
survey



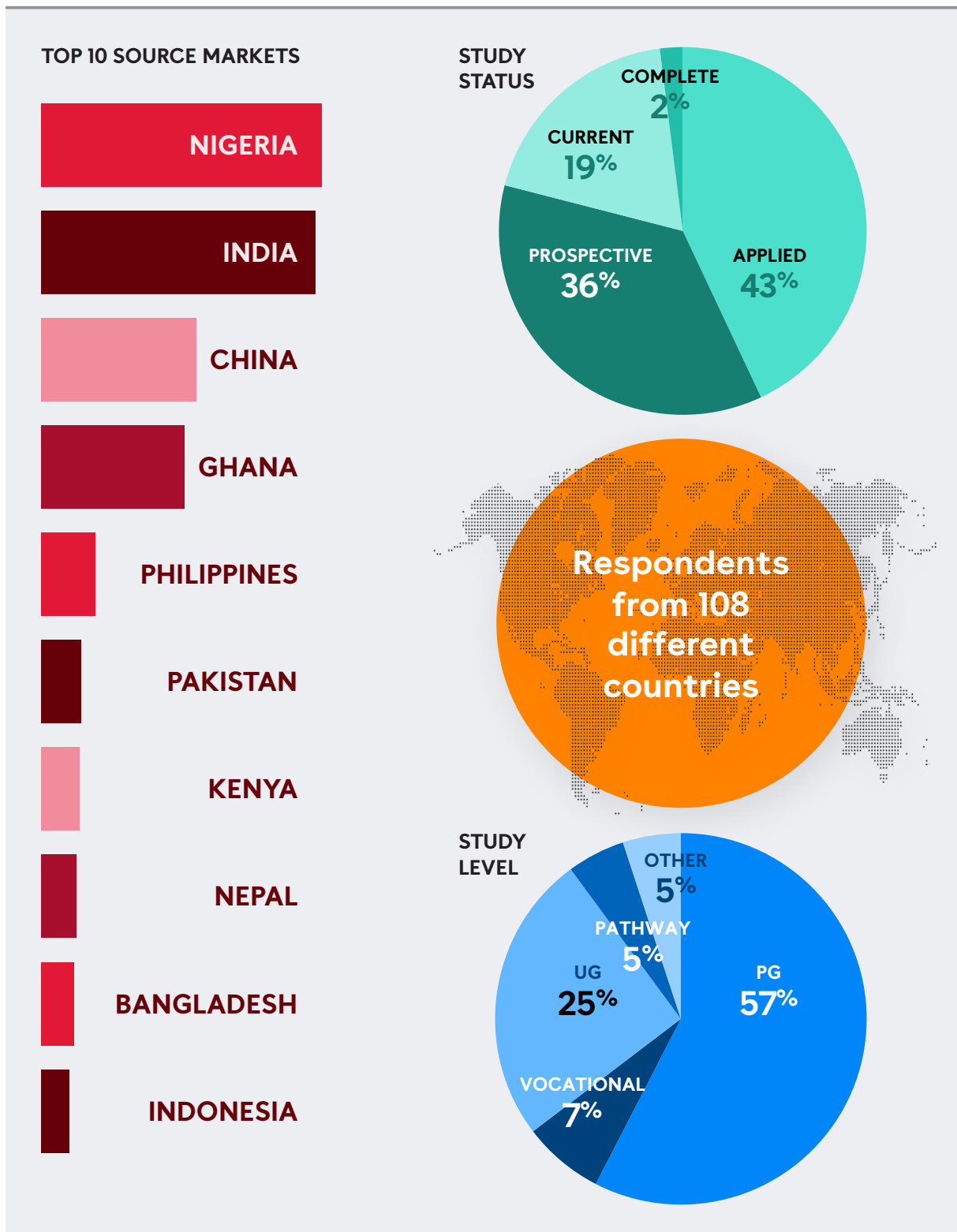
Administered
in English
and Chinese



Conducted
between 27
February and
19 March

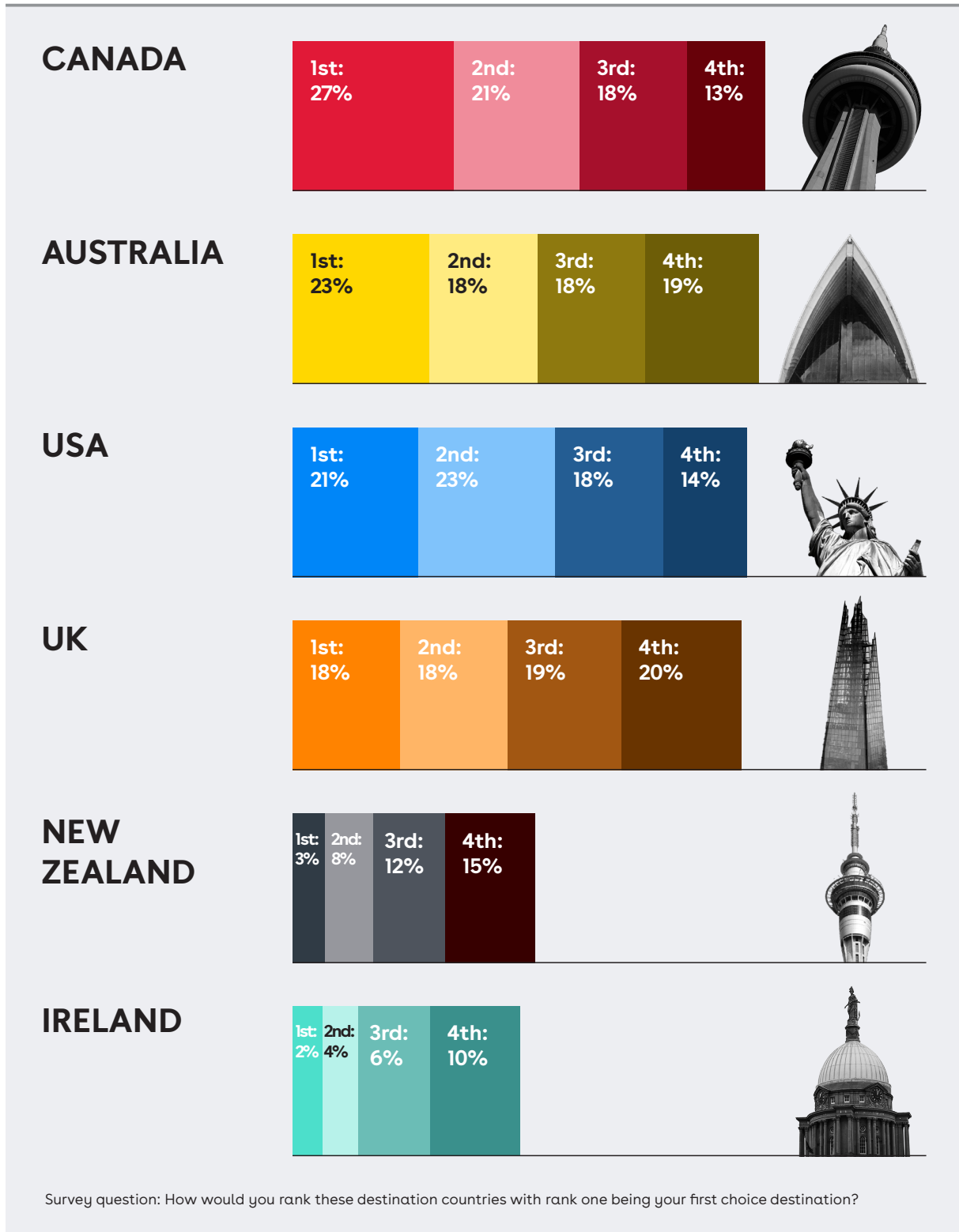
RESPONDENT PROFILE

Our largest ever survey with 21,128 respondents from across the globe



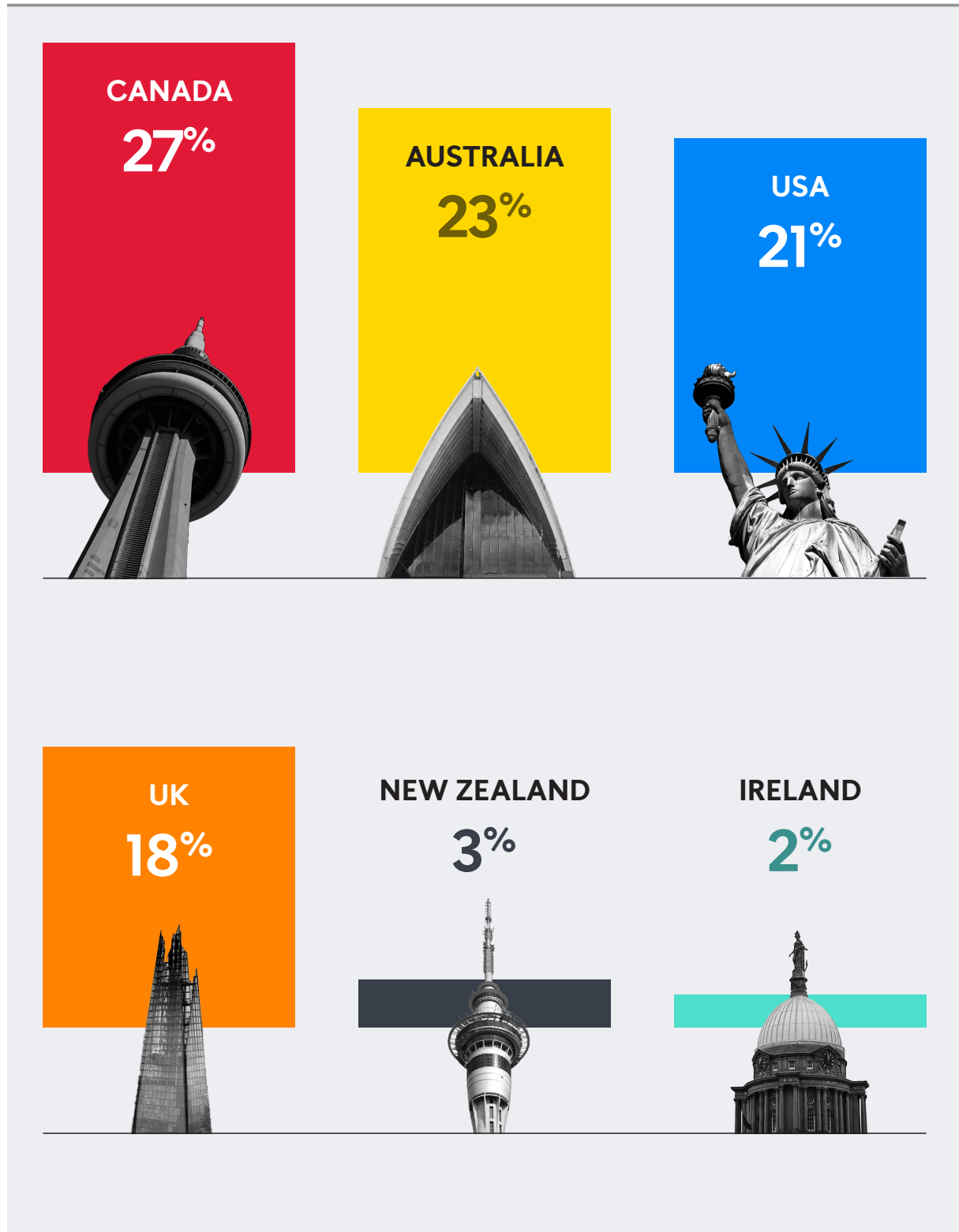
COUNTRIES RANKED BY CHOICE

Competition is fierce, with 34% of students considering three out of four major destination countries



WHICH DESTINATIONS ARE FIRST CHOICE?

Canada remains the most desired destination



PRIMARY FACTORS IN FIRST CHOICE

Globally, high quality of education and post-study employment are top considerations



High quality of education



Good employment opportunities after graduation



Safe country for international students



Supports international students



Part-time work opportunities are great



Welcomes people from other countries

THE ROLE OF POST-STUDY WORK IN STUDENT CHOICE

Availability of employment routes after graduation is a driving influence in study destination

Globally, the availability of a post-study work visa is the main or influencing factor in where they study

63%



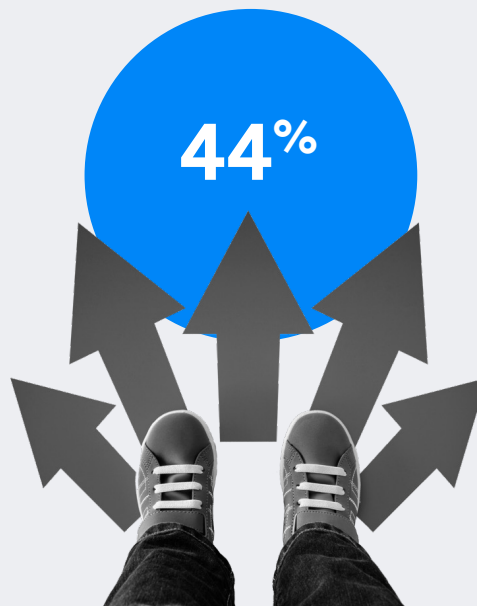
Most students say they will apply for a post-study work visa

72%



Close to half would consider changing their study destination if the duration of the post-study work visa was shortened

44%



POST-STUDY WORK VISAS – WHAT’S IMPORTANT?

What features of the post-study work visa offered by your destination made it attractive?



KEY HEADLINES

Cost of living, availability of part-time work, and general financial concerns are top of mind for students



61%

of students are confident they have enough money to live whilst studying

55%

say they have some general knowledge

21%

say they are highly knowledgeable about how much it will cost



81%

of students are intending to or already are working part time

71%

of students want help finding that work

31%

say that part time work will be the main source of funding their studies

51%

of students say they are reconsidering their decision to study overseas due to recent increases in the cost of living



KEY TAKEAWAYS

COMPETITIVE MARKET

Institutions must consider strategies that attract international students in the key areas affecting first choice, including employment opportunities after graduation. Canada remains the number one choice for students globally, but the shift in US popularity since Emerging Futures 2, only six months ago, indicate that it is all to play for.



POST STUDY WORK

Globally, 63% of students say post-study work is the main or an influencing factor in where they study. Post-study work programmes are helping drive demand and generate interest from a range of countries; over half of students say that the availability of post-study work opportunities was important in their decision about where to study. By creating clearer pathways from education to employment, destination countries will see demand increase from a greater number and more diverse set of countries.



COST OF LIVING

Cost of living, availability of part-time work, and general financial concerns are top of mind for students. 81% of students plan to work or are already working part time during their studies and 71% say help finding that work is the most important financial support their institution can provide. With 51% of students reconsidering studying overseas because of the cost, institutions must look to provide opportunities for students to self-fund their studies through part-time work.





GET IN TOUCH

Contact us

www.idp-connect.com/contact

Across the web

www.idp-connect.com